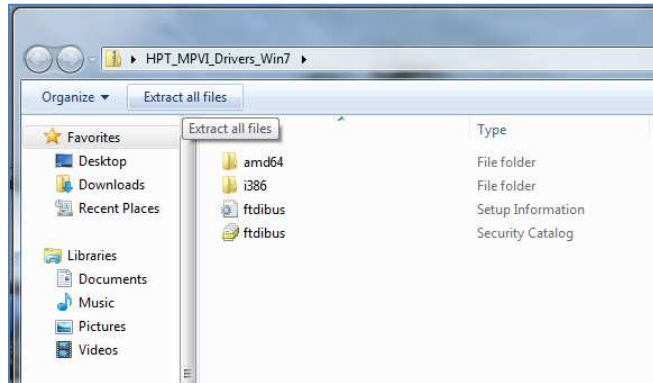


Installing the Dongle on Windows 7

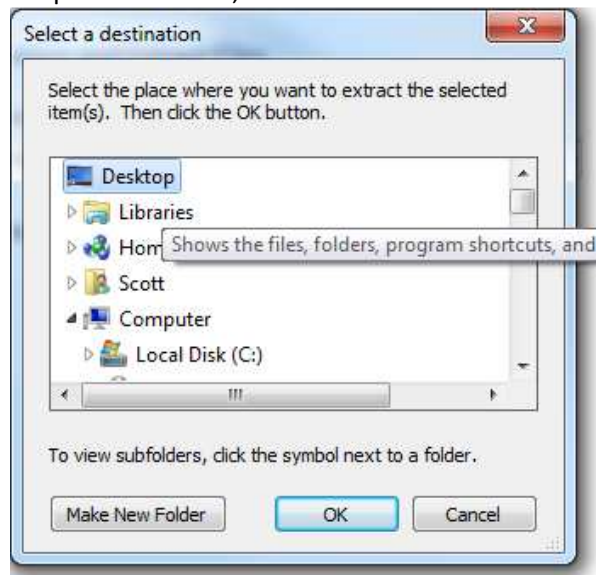
Download the Drivers from the VCM website, and save them to a location on your computer - we suggest the desktop as its easy to find them later.

Open the **HPT_MPVI_Drivers_Win7** compressed folder (the file you have just downloaded),

Click Extract all files.

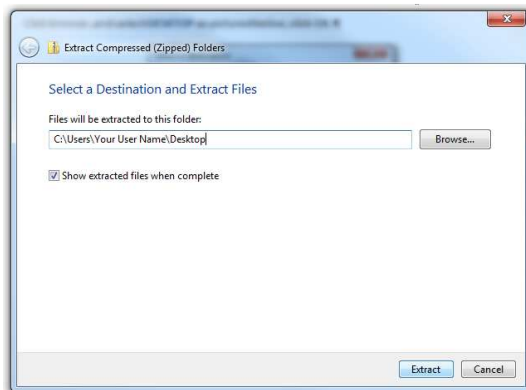


Click browse , and select **DESKTOP** as pictured below, click OK.



This will be the location of the files when they are extracted.

On the next screen, below, you will see the exact location where the extracted files are going to be.



Click **Extract**.

To ensure you have completed the above steps correctly- navigate to the desktop and find/open the folder you have just created.

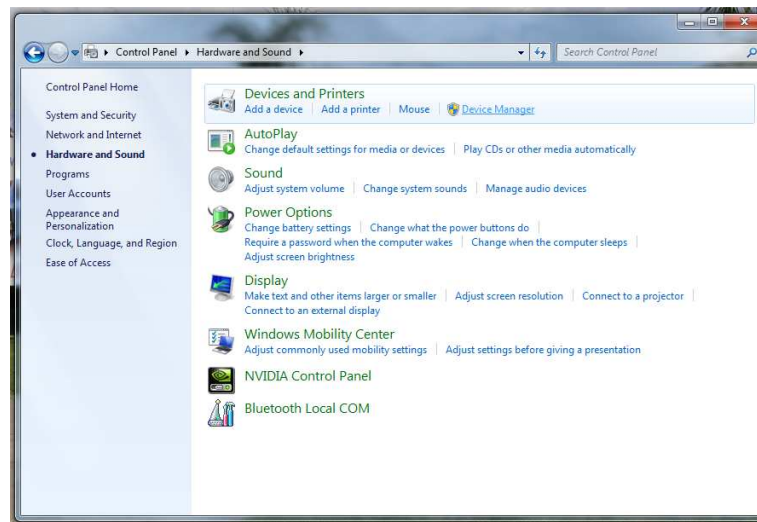
- If you are **unable** to find the folder - you may need to redo the steps above.
- If you **were able** to find the folder - continue on to the steps below;

Go To Start Menu

Click **Control Panel**

Click **Hardware and Sound**

Click **Device Manager**

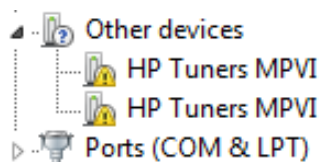


When the device manager opens - plug the HP-tuners dongle into the computer.

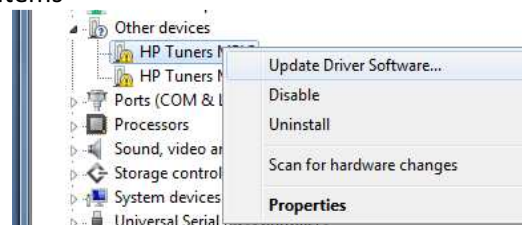
You will then notice 2 items next to a yellow triangle symbol, with a black exclamation mark

HP Tuners MPVI

HP Tuners MPVI

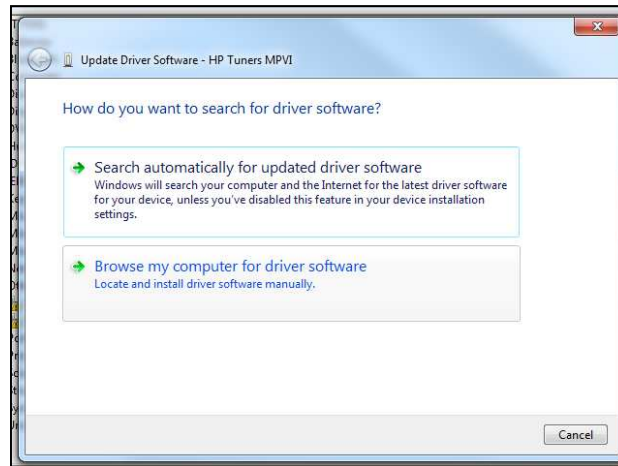


Right click on the upper two of the items



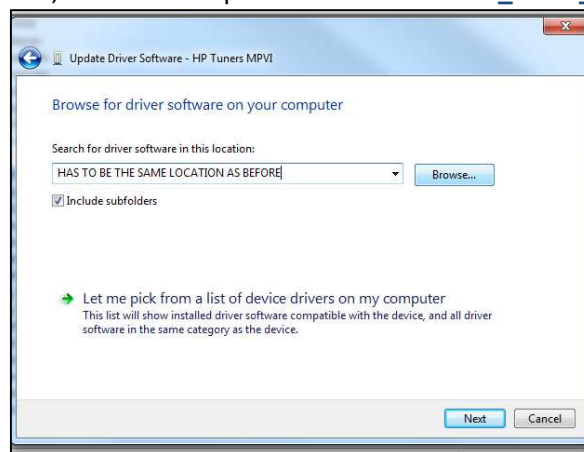
Click **Update Driver software**

Click **Browse My Computer For Driver Software**



Click **browse** - and navigate to the location you extracted the files to previously. This is when saving the files to your desktop makes it easier to find the files.

This will be right up the top of the list, under desktop in a folder called **HPT_MPVI_Drivers_Win7**



Click **Next**.

This will install the 1st of the HP Tuners Dongle Drivers, you now have to complete the same procedure as above (starting from the step in Device Manager), by right clicking on the HP-tuners MPVI next to the yellow triangle with the exclamation mark, under other devices.

Once complete you will have a fully functioning HP tuners dongle.

To test the HP Tuners Dongle and ensure it is correctly working go to;

HP Tuners Editor

- Help (Menu located on the top bar of the software)
- Licence Info (2nd Option down)
- Click the HP Tuners Logo (Located on the top left corner of the licence info screen)
- If your dongle is connected correctly, your licence information will display on the screen.

If you are having issues with this installation, or are not confident in the process - organise an IT professional to come and complete it for you.